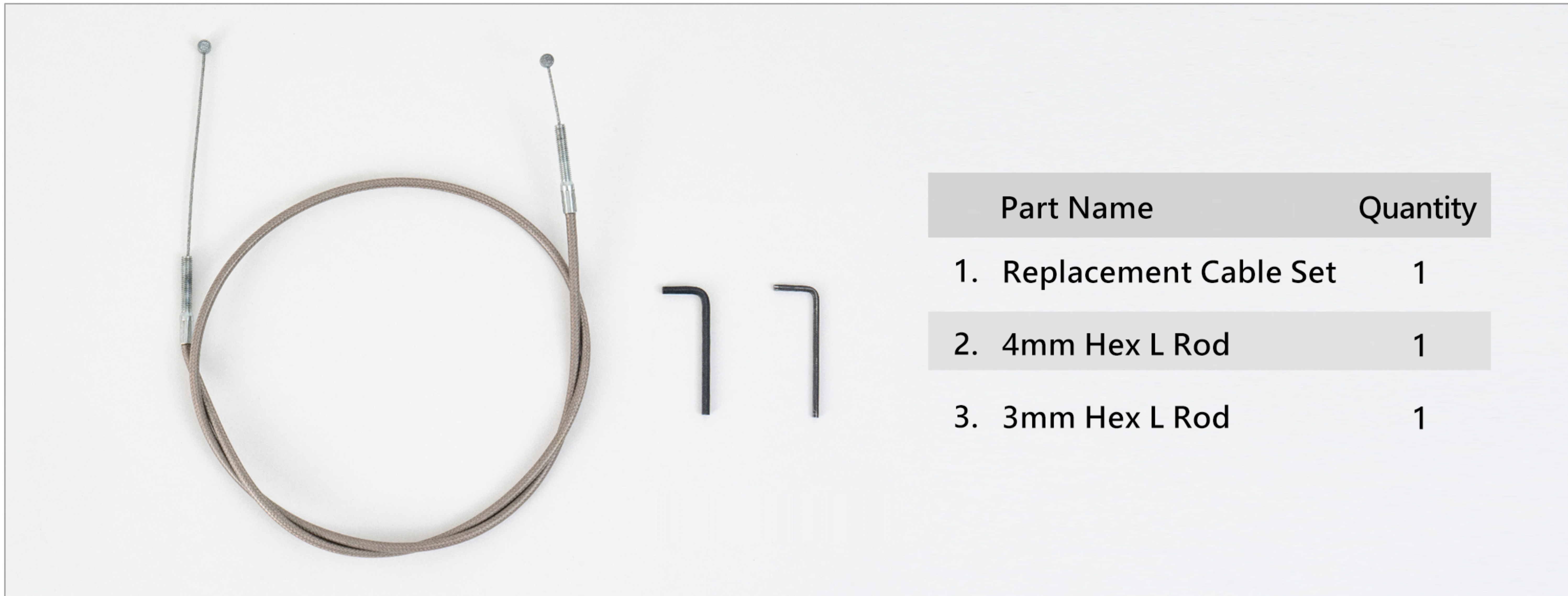


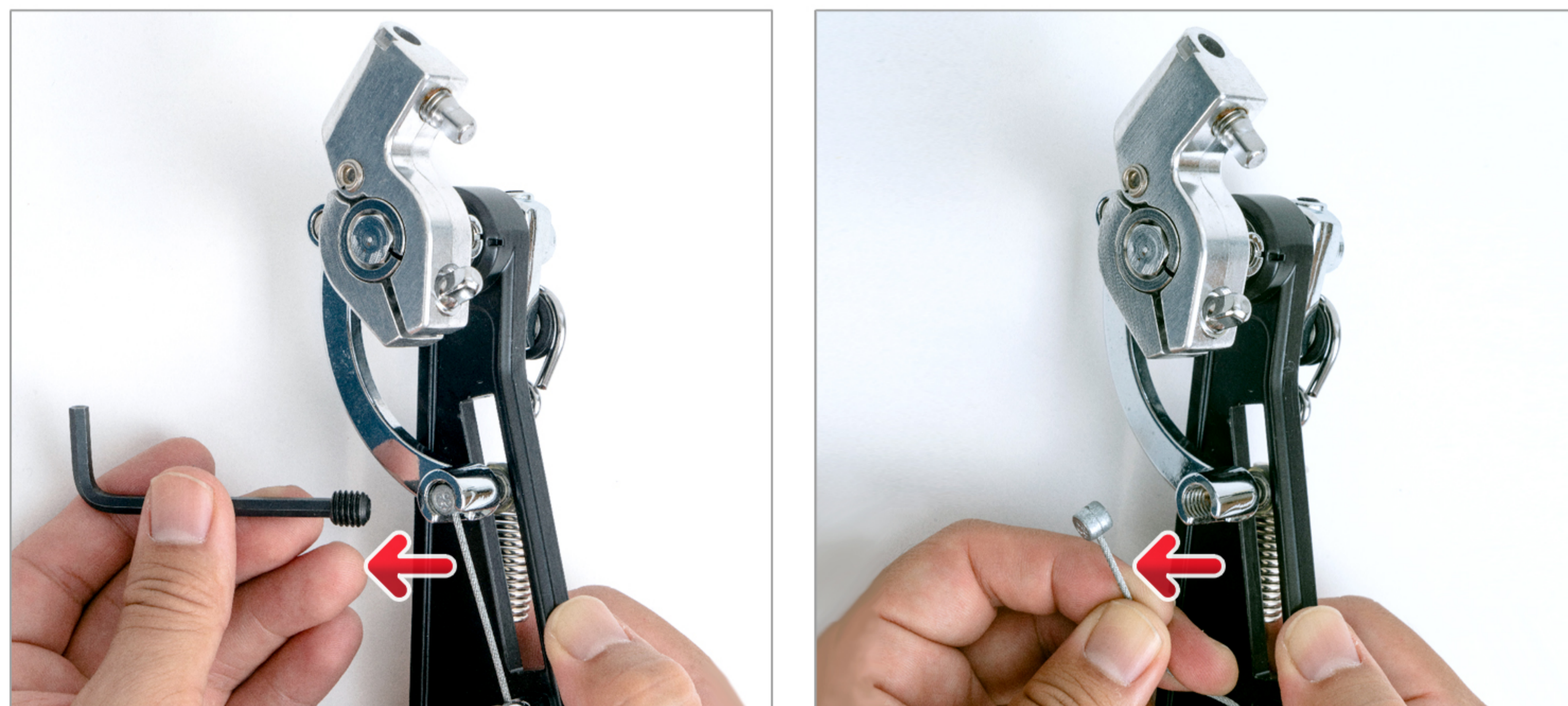


**Parts List:**



**Remove The Damaged Cable from Beater Post**

Loosen the screw in the C shaped drive shaft to remove the cable with 4mm Hex L rod.



**Remove The Damaged Cable from Pedal Footboard**

Loosen the screw in the cable linkage slot then take out the cable head. Pull out rubber sleeve.

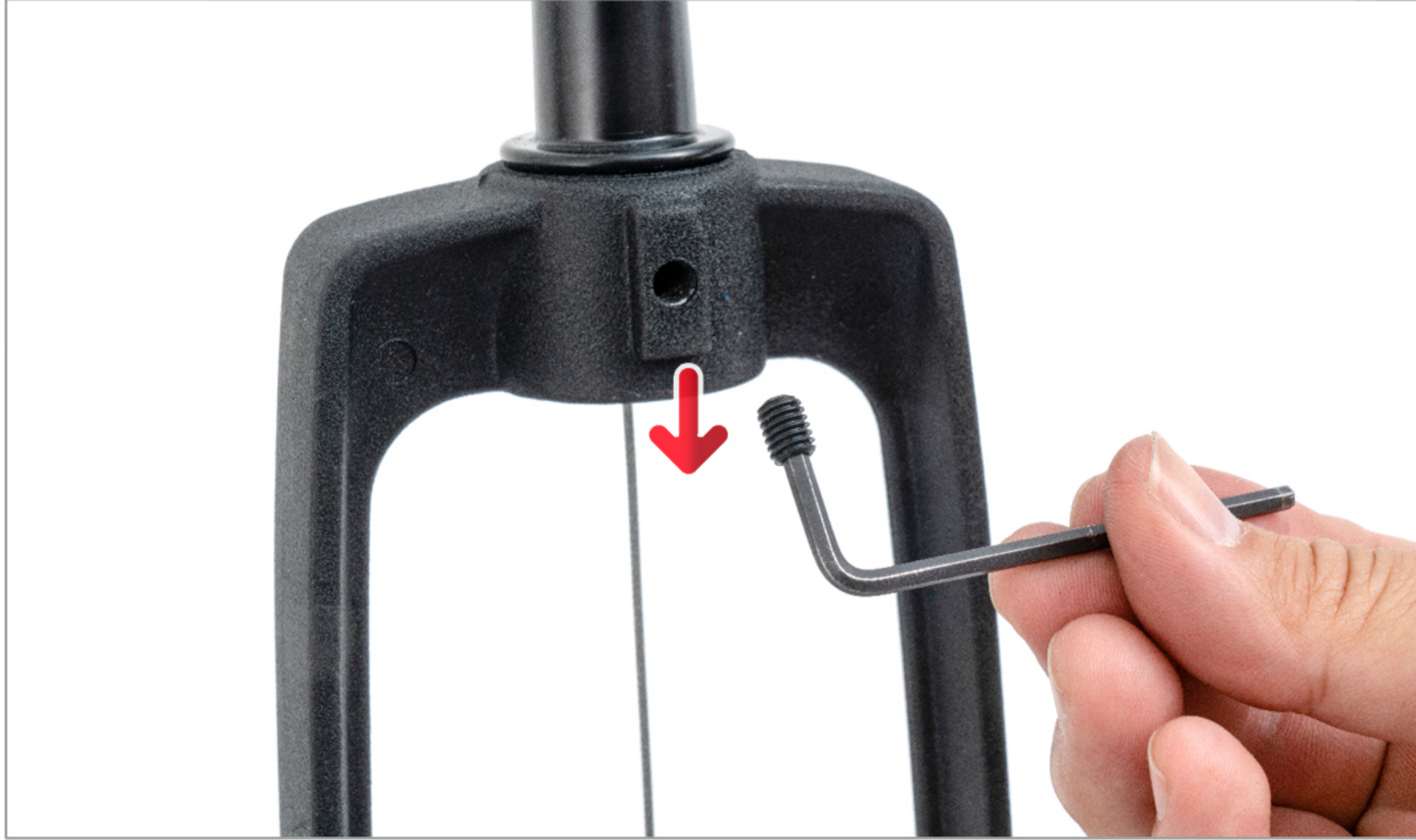






### Remove The Damaged Cable from Pedal Frame

Loosen the screw in the top center of pedal frame to pull out the cable with 3mm Hex L rod.



Turn counterclockwise to loosen the rubber winder cap then pull out the cable from the metal housing.



### Pull Out The Damaged Cable

Turn counterclockwise to pull out the cable from the beater Post.







### Install New Cable – On The Beater Post

Turn clockwise to locate the cable metal cap. Insert the cable head in the slot of C shaped drive shaft then tighten the screw to lock in place.



Make sure the cable is lined up straight from the cable housing.

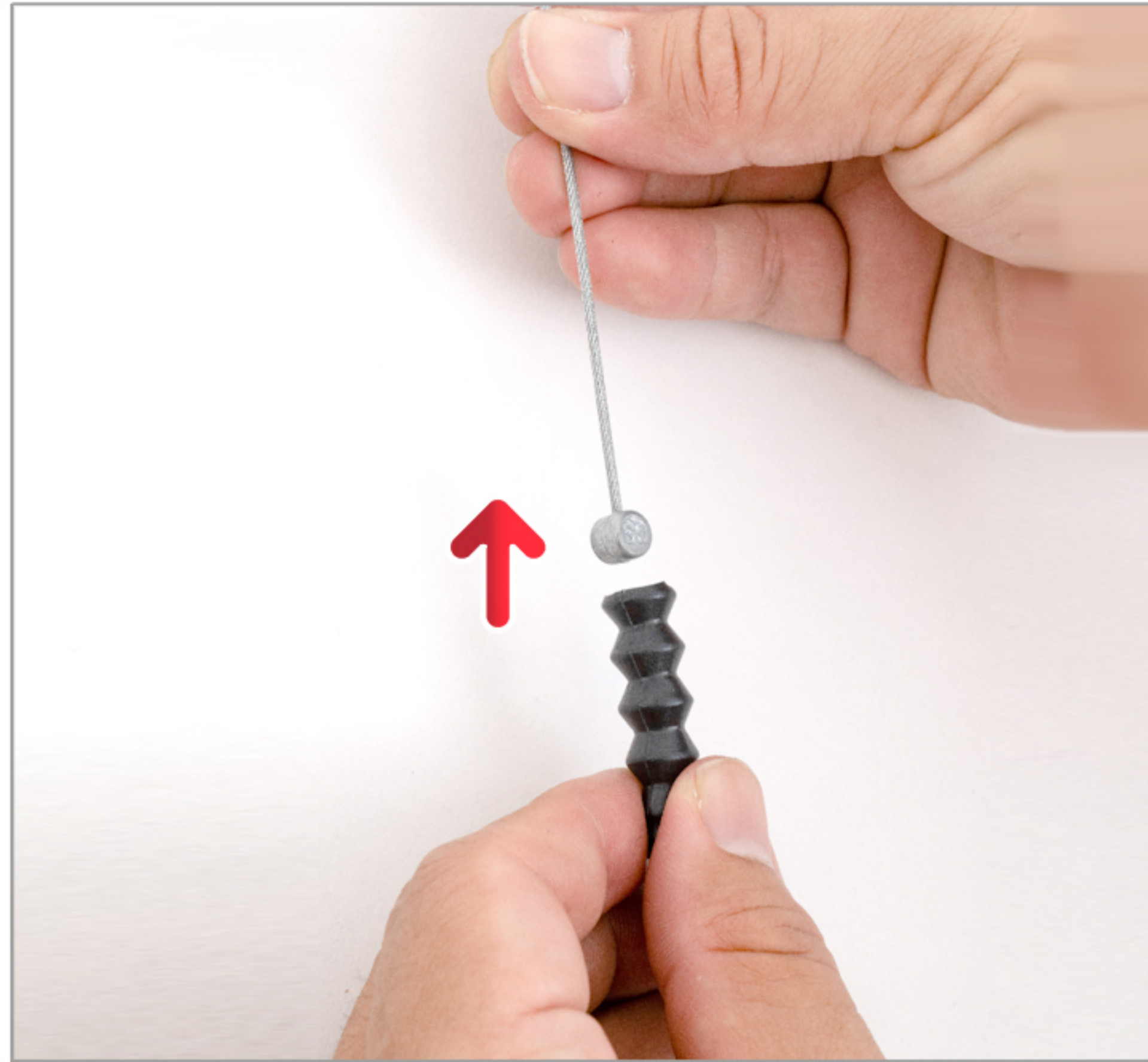






### Install New Cable – On The Pedal

Insert the cable in the rubber winder cap first then the rubber sleeve. Place the cable in the black housing.



Turn clockwise to insert the cable and keep around 1cm threaded part out of the black housing. Turn rubber winder cap clockwise onto the black housing.





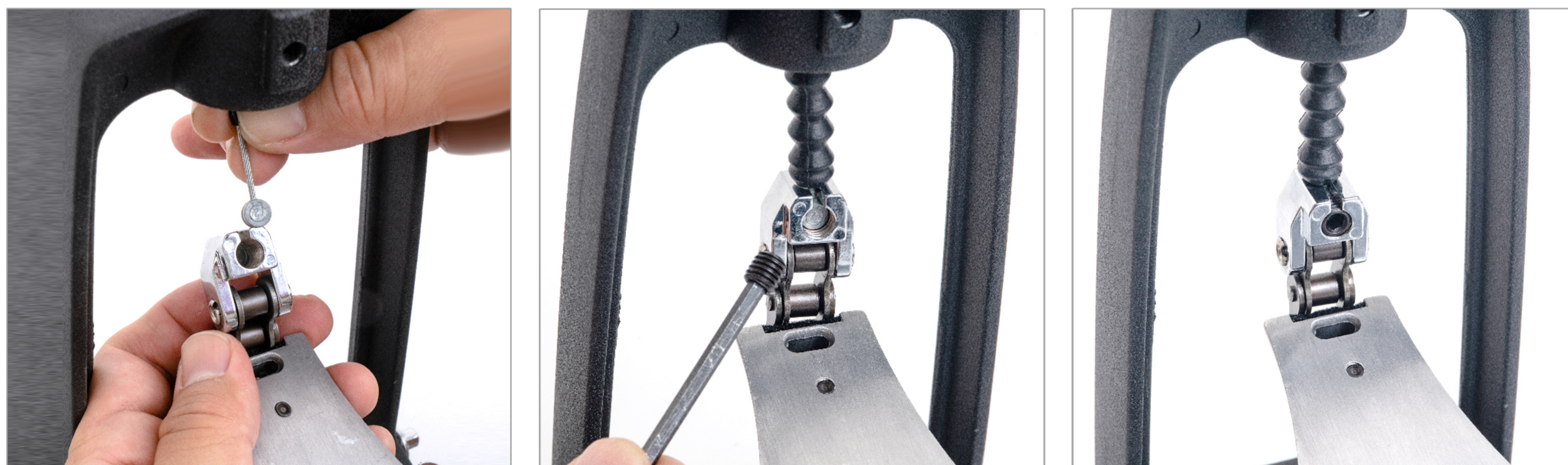


### Install New Cable – On The Pedal

Insert the black housing on the pedal frame. Make sure the point marked in green below is lined up with the screw hole (circle marked in red). Tighten the screw on the pedal frame with 3mm Hex L rod.



Insert the cable head on the linkage slot then tighten with 4mm Hex L rod.



### Good To Go!

Press the footboard to test the movement before you go!

